



# HydroRIG-P

Real-time water quality system for rivers and creeks to understand the environmental impact of operations

The **HydroRIG-P** is a real-time water quality measurement system that can be configured for a wide range of parameters. It utilizes **HydroSphere** cloud or on-premise data delivery and storage.

At the core of the system is the **YSI EXO water quality sonde**. It is built with extremely durable materials to withstand harsh field conditions over time and features a powerful central wiper to prevent sensors from fouling.

This logger/communication solution is powered by 12V batteries and can send data directly from the field.

### EXO smart sensor parameters:

- Conductivity/Temperature (wiped and non-wiped)
- Dissolved Oxygen
- fDOM
- ISEs (Ammonium, Chloride, and Nitrate)
- NitraLED (UV Nitrate)
- pH (guarded and unguarded)
- pH & ORP (guarded and unguarded)
- Rhodamine
- Total Algae (Chlorophyll + Phycocyanin or Phycoerythrin)
- Turbidity

## Data display & alarming

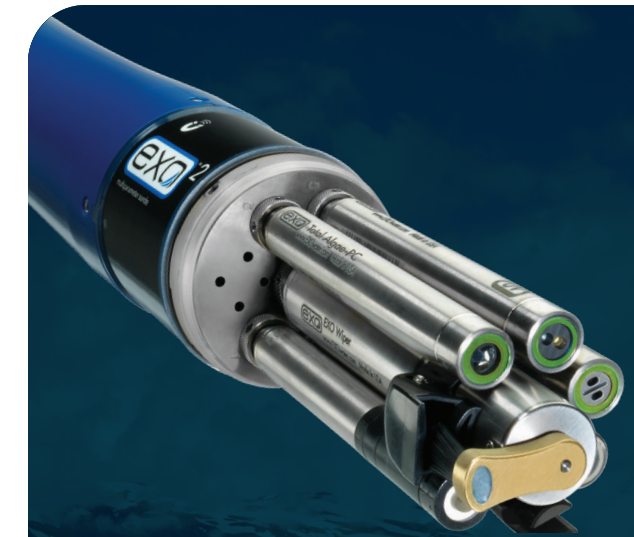
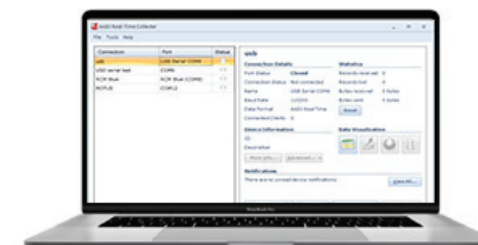
### Option A – HydroRIG-P can utilize HydroSphere data delivery system

- Data available from any internet-connected device
- Visualize and compare site data in real-time
- Configure HydroRIG-P from any connected device
- Design dashboards to publish data to public users
- API connectivity to third party databases
- Data security with latest security protocols
- Easily design custom data tables and graphs



### Option B – HydroRIG-P can also function point to point with locally installed software

- On-premise data real-time over GSM, satellite or radio
- Simple Real-time Collector managing dataflow to logger in the field
- Configure HydroRIG-P from on-premise server
- Simple display and export functionality or send data to other software for more specialized data display



## YSI EXO with wiper

The key to the YSI EXO Sonde is the use of field-replaceable, smart sensors. EXO smart sensors hold their meta and calibration data for traceability even when disconnected or swapped between instruments. Simple plug-and-play digital technology reduces errors in the field and allows for quicker setup and more customization. All sensors have wet-mate connectors and are constructed of titanium and durable components to protect them during long deployments.

### EXO Anti-fouling

One of the largest barriers to collecting good water quality data is the threat of fouling. The industry-leading EXO Central Wiper protects sensors from fouling, extending deployment intervals, improving data accuracy during long-term monitoring projects, and reducing trips to the field for equipment service.

### Ultimate Monitoring Platform

Designed for long-term, unattended use, EXO's durable materials and anti-fouling technology provide protection in harsh environments. Low power consumption, unmatched sensor payload, and an industry-leading warranty make EXO the ultimate choice for long-term water quality monitoring.

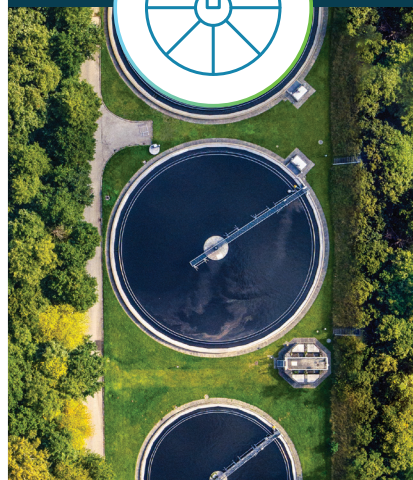
### Road Construction Environmental Monitoring



### Industrial Final Effluent Monitoring



### Sewage Overflow Impact Monitoring



# Xylem |'zīləm|

- 1) The tissue in plants that brings water upward from the roots;
- 2) a leading global water technology company.

We're a global team unified in a common purpose: creating advanced technology solutions to the world's water challenges. Developing new technologies that will improve the way water is used, conserved, and re-used in the future is central to our work. Our products and services move, treat, analyze, monitor and return water to the environment, in public utility, industrial, residential and commercial building services settings. Xylem also provides a leading portfolio of smart metering, network technologies and advanced analytics solutions for water, electric and gas utilities. In more than 150 countries, we have strong, long-standing relationships with customers who know us for our powerful combination of leading product brands and applications expertise with a strong focus on developing comprehensive, sustainable solutions.

**For more information on how Xylem can help you, go to [www.xylem.com](http://www.xylem.com)**

---

**AANDERAA**®



Aanderaa Data Instruments AS  
Sanddalsringen 5b, PB 103 Midtun,  
N-5843 Bergen, Norway

Tel +47 55604800  
Email [sales.nor@xylem.com](mailto:sales.nor@xylem.com)  
[Aanderaa.com](http://Aanderaa.com) | [YSI.com](http://YSI.com)

All information presented herein is believed reliable and in accordance with accepted engineering practices. Xylem makes no warranties as to the completeness of this information. Users are responsible for evaluating individual product suitability for specific applications. Xylem assumes no liability whatsoever for any special, indirect or consequential damages arising from the sale, resale or misuse of its products. Subject to change without notice.

© 2025 Xylem Inc. or its affiliates. All rights reserved. EXO and HydroSphere are trademarks of Xylem or one of its subsidiaries.

B203 R1 0225 NOR

**xylem**  
Let's Solve Water